

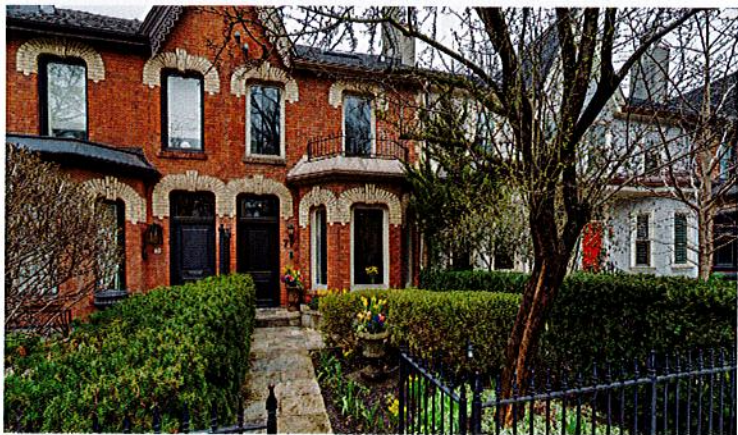


STUNNING CABBAGETOWN VICTORIAN

45 SALISBURY AVENUE
TORONTO, ON | SOLD
\$1,799,000

Spectacularly renovated Victorian Brownstone blends contemporary interiors, lustrous quarter sawn oak floors, soaring ceilings, crown mouldings, fireplace and bespoke kitchen to create an elegant backdrop for sophisticated urban lifestyle and gracious entertaining. Master retreat has spa-ensuite, walk-in closet and balcony with sweeping city views.

RON REAMAN*
1.416.960.9995 | RREAMAN@SOTHEBYSREALTY.CA
RONREAMAN.COM



HAZELTON CONTEMPORARY HERITAGE HOME

77 HAZELTON AVENUE
TORONTO, ON | SOLD
\$5,000,000

Preeminent, prestigious, perfectly preserved Hazelton Avenue is renowned for glamorous renovations discreetly disguised beyond heritage protected homes. This Victorian townhome with contemporary interior features a rare outdoor pool and garage. Walk along tree-lined streets to world-class dining, gourmet grocers, haute couture, five star hotels, art galleries and two subway lines.

LINDA CHU*, 1.416.716.1218 | LCHU@SOTHEBYSREALTY.CA
LISA-MARIE DOOREY*, 1.416.960.9995 | LDOOREY@SOTHEBYSREALTY.CA
WENDY SPENCER*, 1.416.960.9995 | WSPENCER@SOTHEBYSREALTY.CA
DOWNTOWNTORONTOHOMES.COM



LUXURY LIVING AT THE BELLAGIO

300 BLOOR ST EAST, UPPER PENTHOUSE 01
TORONTO, ON | MLS C4433887
\$2,595,000

Spectacular unobstructed views surround this 2,200 sq. ft., two bedroom suite with floor to ceiling windows throughout. Open concept living and dining area with walk-out to terrace. Cozy adjoining den with gas fireplace. Large chef's kitchen. Gorgeous master suite with spa like bathroom and private terrace. Two car parking and two lockers.

CHERYL THOMPSON*
1.416.960.9995 | CTHOMPSON@SOTHEBYSREALTY.CA
TORONTOSFINESTHOMES.COM

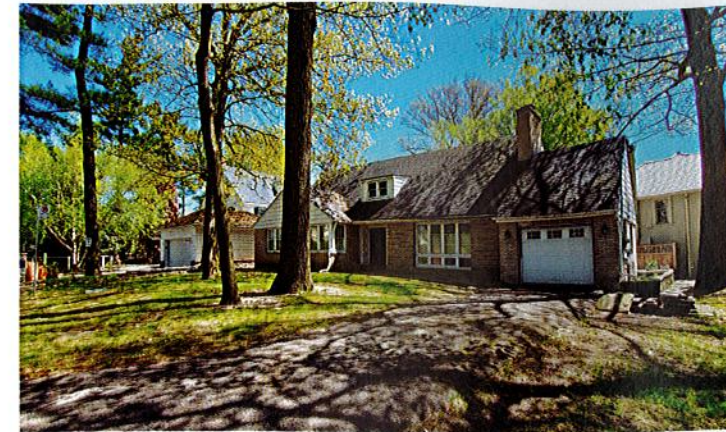


BEDFORD PARK

39 ROE AVENUE
TORONTO, ON | MLS C4490044
\$2,429,000

Location, style and quality come together to create an offering seldom available. Functionality and finishes can be attained on one of the area's quietest streets, located in a desirable area, in the John Wanless Public School district, with almost maintenance free grounds and multiple areas of outdoor seating. This is an urban entertainer's dream.

ROBERT NELSON*, 1.416.960.9995 | RNELSON@SOTHEBYSREALTY.CA
NIGEL DENHAM*, 1.416.300.1245 | NDENHAM@SOTHEBYSREALTY.CA
NELSONANDDENHAM.COM



QUIET ENCLAVE IN LAWRENCE PARK

47 BAYVIEW WOOD
TORONTO, ON | MLS C4457215
\$2,898,000

In a quiet enclave within Toronto's prestigious Lawrence Park neighbourhood sits a mature and expansive lot that provides a wonderful opportunity to renovate, top up or build a new custom home. Located so close to area parks, top private schools and more, this is a special parcel of land in a uniquely tranquil setting that's ready for its next chapter.

LUCILLE CHENOWETH*, 1.416.726.5225 | LCHENOWETH@SOTHEBYSREALTY.CA
MYLES SLOCOMBE*, 1.416.554.0801 | MSLOCOMBE@SOTHEBYSREALTY.CA
THECSGROUP.CA



LUXURY LIVING - HUMBER VALLEY

14 HARTFIELD ROAD
TORONTO, ON | MLS W4497442
\$2,850,000

This gorgeous home is enveloped by impressive foliage. Features space, plenty of natural light. With pool and long stretches of grass, the backyard will be your new sanctuary. The sloping roof gives bedroom ceilings character, without compromising on area. Spa-like bathrooms. PHD and Colewood Construction renovations completed in 2000.

ASHLEY SHAW*
1.416.828.6236 | ASHAW@SOTHEBYSREALTY.CA
ASHLEYSHAWANDASSOCIATES.COM



A BEAUTY NEAR THE LAKE

209 PINELAND AVENUE
BURLINGTON, ON | MLS 30745082
\$1,189,000

This home has charm in abundance. It is an immaculate three bedroom home in a lovely south Burlington neighbourhood. Beautiful tree-lined streets and a short walk to Lake Ontario. Wonderful family area near good schools, shopping and public transit. Professionally landscaped. Just over 3,000 sq. ft. of living.

NANCY ROBERTSON*, 1.905.334.9422 | NROBERTSON@SOTHEBYSREALTY.CA
ANDREW KADWELL*, 1.905.399.8187 | AKADWELL@SOTHEBYSREALTY.CA
THENRTEAM.COM



IRVINE CREEK FARM

6673 WELLINGTON 16 ROAD
WELLINGTON, ON | MLS 30745498
\$2,495,000

Irvine Creek Farm - 100 acre estate property just minutes from the spectacular Elora Gorge and Fergus the largest community in Centre Wellington. The Century Home has been completely renovated with uncompromising detail. The remarkable architecture of this home is a must see with over 6,900 sq. ft., 7 bedrooms, 6 bathrooms and multiple living spaces.

CHERYL DORRICOIT*
1.905.220.3164 | CMDORRICOIT@SOTHEBYSREALTY.CA